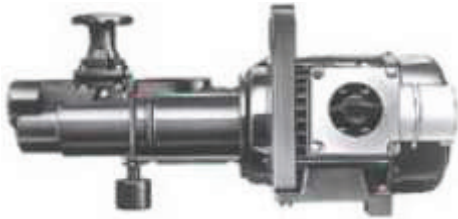


# Series SMP2

Progressing Cavity Pump in block design



## Pumped liquid

Pure water, sewage, oil, waste oil, alcohol, wine, juice, milk, lyes, brines, acids, etc.

## Main fields of application

In all kinds of auxiliary circuits, e.g. for the pumping or filling up of wines or liquors, in the beverage or food industry, breweries, in the chemical industry or for waste utilization

## Performance data Series SMP2

Capacity	Q	up to 92	l/min
Discharge pressure	pd	up to 6	bar
Differential pressure	pdiff	up to 6	bar
Viscosity	v	up to 11500	mm <sup>2</sup> /s
Fluid temperature	t	up to 60	°C
No. Stages	-	up to 1	-

## Construction features

- Block design (Motor attached to pump via flange or lantern)
- Pedestal mounting
- Dry installation
- Horizontal installation
- Self - priming

Sulteq Distributie Pompen B.V.  
Opaalstraat 60  
7554 TS Hengelo(o)  
Phone.: +31 (0) 88 25 88 900